

Vet Ultrasound

More than a Portable System

MyLab30[™] **VET** Gold



esaote
piemedical

More than Mobile

Setting a new standard: the Premium-performance Mobile Ultrasound

- **A new class of systems:** the Gold Standard in terms of quality and solutions meets the portable ultrasound to deliver unmatched performance, defining a new class of systems.
- **Two electronic connectors:** Two probes simultaneously connected to the systems allow fast selection and activation as well as extended range of applications even in the portable configuration. The high-level of the system ensures probe compatibility with top-end systems.
- **Ergonomic keyboard:** derived from top-end systems, it offers extended control panel and mode-dependent controls, to obtain the best imaging in the shortest time. Ease of use and user's comfort are guaranteed.
- **High performance 15" LCD monitor:** the most recent LCD technologies ensure clear image visualization, low reflection and minimum eyestrain.
- **Integrated Battery:** thanks to the optimal integrated lightweight battery, the high-level features of the MyLab30 VET Gold can be brought where they are needed: innovative workflow and virtual movement of echo-lab near to the patient.

From **stationary**
configuration...



Virtually move your echo-lab to the point-of-care

The new MyLab30 VET Gold is able to perfectly match the latest technological innovations with ease of use and portability.

This new concept reflects and fully satisfies the recent evolution of the modern veterinarian: high performance and reliability on top of compactness and portability.

While ensuring very high diagnostic confidence, the new MyLab30 VET Gold offers a wide range of configurations to meet any clinical need, application and any user preference:

- **Portable:** thanks to the integrated lightweight battery, MyLab30 VET Gold can easily work with full performance even in portable configuration. This feature is especially useful for use in equine clinics or field use.
- **Multi-site:** mobility is a rapidly growing request. MyLab30 VET Gold offers a wide of range of trolleys and accessories providing the freedom to bring complete and reliable diagnostic capability wherever you need and whenever you want.
- **Chart-based:** when positioned on the stationary trolley, it offers the consistency of a standard console system, including a large LCD monitor, extended back-lighted keyboard, probe holders and peripheral locations.

...to the point-of-care



More than Powerful

A powerful platform re-designed to meet a premium-performance mobile ultrasound system

A growing number of ultrasound users is today looking for an optimal solution where high performance meets mobile systems and portability.

With MyLab30 VET Gold, any technological innovation and solution has been re-designed to be applied to the most advanced portable system, able to deliver unmatched performance, increased diagnostic confidence and an extreme ease of use at the same time.

Moreover, the high-level platform ensures extended modularity and upgradeability as well as easy and fast service diagnosis and recovery procedures.

Increased productivity and user comfort, maximized and protected value of the investment according to the longer product life.



A technological range
never expected
in this class of systems

VET Software

This high-end system has full veterinary features, while the extending technologies and solutions of the MyLabGold platform brought the image quality to the highest level.

Features like dedicated veterinary applications, veterinary data input screen, dedicated veterinary patient structure, veterinary application icons and body marks meet any clinical need and any user preference.

The dedicated veterinary measurements and calculation packages: abdominal measurements, reproduction gestational age, cardiological calculations and equine musculoskeletal make this system a truly universal dedicated veterinary ultrasound system.

XStrain™ 2D-Based Strain-Strain Rate

The innovative XStrain technology provides an advanced and angle-independent 2D imaging-based tool for analyzing myocardial velocities, strain and strain rate detection. The quantification of these parameters is the most promising clinical technique for the early detection of myocardial contractility and distensibility impairment. XStrain provides an unmatched level of diagnostic capability and allows an innovative approach to further clinical procedures (i.e. CRT - Cardiac Resynchronization Therapy).

CnTI™ Contrast Tuned Imaging

Esaote's revolutionary technology in combination with the latest generation of ultrasound contrast agents provide precise micro-bubble detection. MyLab30 VET Gold perfectly manages this technology and delivers impressive results in a wide range of application and probes.

XView Real-Time Adaptive Algorithms

The latest version of real-time complex image processing algorithm, XView, elaborates the pattern of every single frame at the pixel level, eliminating speckle and noise artifacts, dynamically enhancing tissue margins and improving tissue conspicuity. XView increases diagnostic confidence without any negative manipulation of the final image or loss of frame rate.

MView Multi-View Imaging

Combined contributions of standard and steered ultrasound beams allow optimized image quality for comfortable detection of every anatomical structure and help to eliminate doubts in the final diagnosis. By reducing the presence of artifacts, shadowing and speckle, higher readability of the diagnostic images is guaranteed.



More than Image Quality

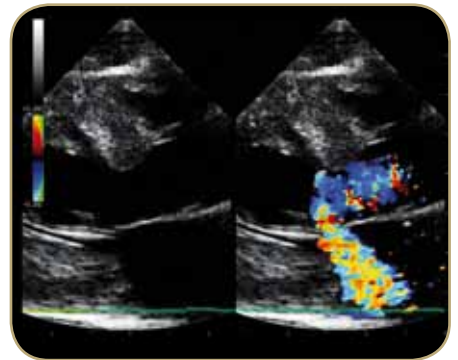
The clinical results reflect **diagnostic confidence**



TP-View Extended field of View



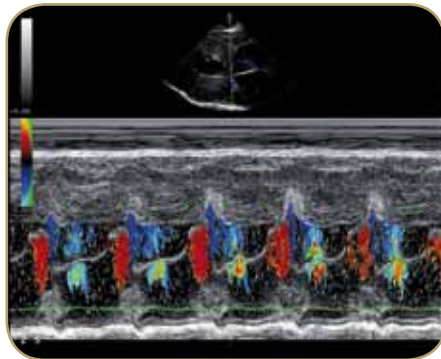
XView Real-time Adaptive Algorithms



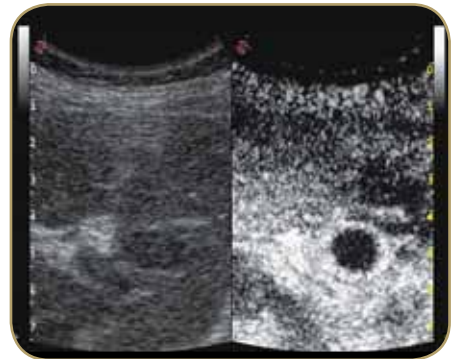
B+B-CFM Mode



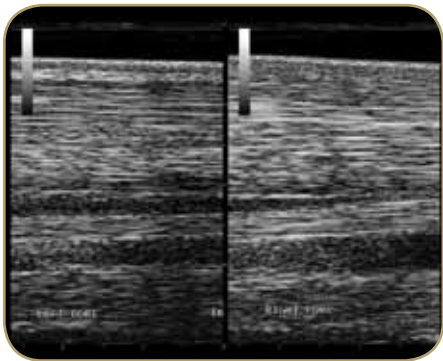
TEI™ Tissue Enhanced Imaging



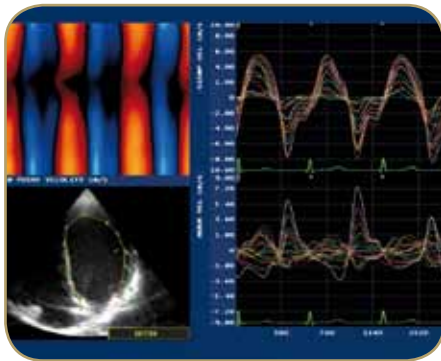
Color M-Mode



CnTI™ Contrast Tuned Imaging



MView Multiview Imaging



XStrain



MyLabDesk

More than Data Management

The key to enter today's veterinary medical world

Veterinary healthcare standards have changed compared to the past and the evolution is well visible both in the public and private environment.

Hospitals and big clinics are more and more oriented to RIS/PACS systems, with special attention to DICOM and IHE compliance.

Private offices are anyway evolving, and physicians ask for easy and fast modalities to export, review, report and share clinical data.

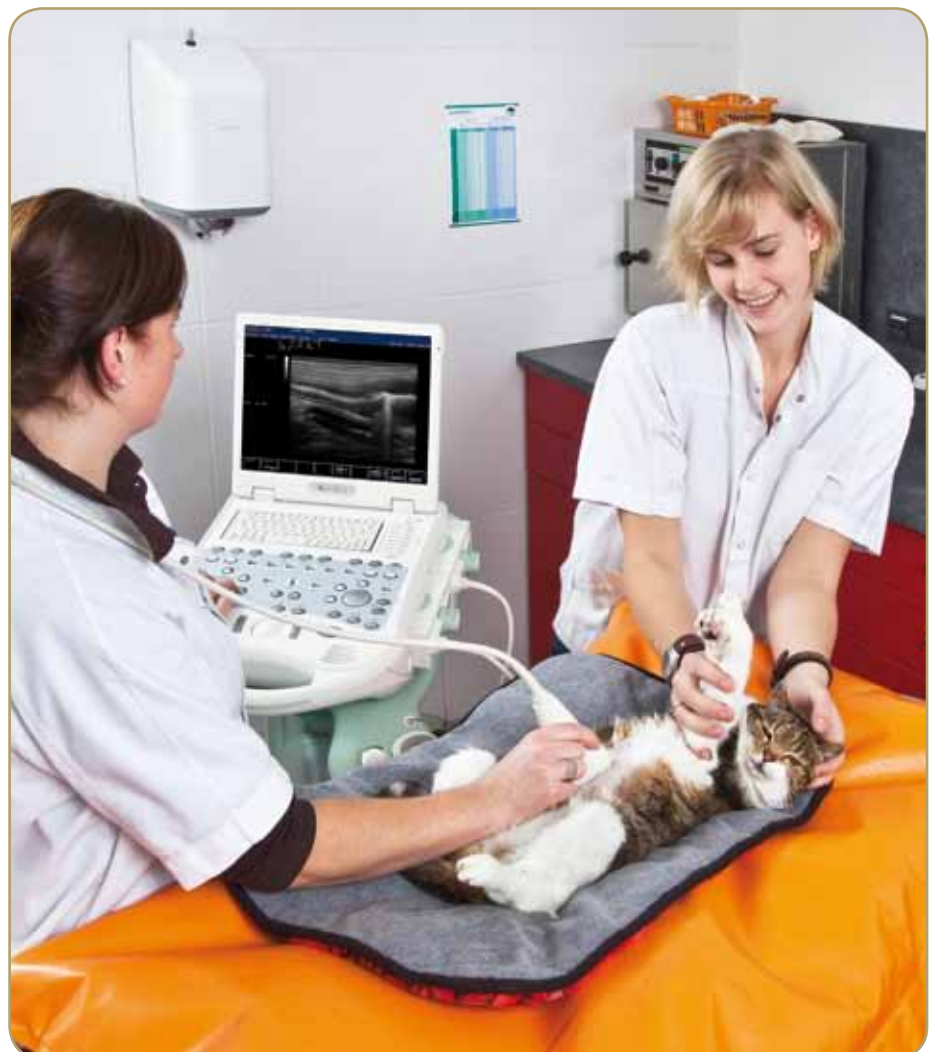
MyLab30 VET Gold offers the most up-to-date solutions:

- **High capacity** (>120 GB SATA) for internal data storage
- **USB 2.0 and CD/DVD** to export clinical data (proprietary, Windows® and DICOM format)
- **Integrated network board** for direct connection to LAN
- **Direct Connection** to external PC or workstation
- **Compatibility** with mobile devices
- **Easy connection** to Windows®/Dicom printers
- **Wireless** connection capability
- **BioPACS™ (optional)** - A Single-Server mini-PACS configuration for patient-oriented ultrasound data management
- **Org@nizer™ (optional)** - A scalable platform for the combined management of US images and clips, ECG waveforms and standard Windows documents

MyLab™Desk

MyLab30VETGold offers the MyLabDesk™ software package, an exclusive Esaote solution allowing the user to install the same software running on the ultrasound system on any Windows PC.

Examination of clips and images, annotations, measurements, reporting, printing, exporting, etc... made easier and more efficient.





Foldable trolley



Height-adjustable trolley



Portable



Deluxe trolley

MyLab30[™] VET Gold



ISO 13485:2003 ISO 9001:2008



Windows® is a registered trademark of Microsoft Corporation



Esaote S.p.A.

International Activities: Via di Caciolle, 15 50127 Florence, Italy, Tel. +39 055 4229 1, Fax +39 055 4229 208, international.sales@esaote.com

www.esaote.com

FRANCE
Esaote France S.A.R.L.
22, rue Pierre Grange, 94124 Fontenay-sous-Bois
Tel. +33 1 4871 2525, Fax +33 1 4871 3630
esaote.france@wanadoo.fr

GERMANY
Esaote Biomedica Deutschland GmbH
Max-Planck-Straße 27a, 50858 Köln
Tel. +49 221 9268 00 00, Fax +49 2234 9679 628
info@esaote.de

SPAIN
Esaote España S.A.
Avda San Sebastian, s/n 08960 Sant Just Desvern, Barcelona
Tel. +34 93 473 2090, Fax +34 93 473 2042
info@esaote.es

THE NETHERLANDS AND BELGIUM
Pie Medical Benelux B.V.
P.O. Box 1132, 6201 BC Maastricht
Tel. +31 43 3824650, Fax +31 43 3824651
benelux@pie.nl

UK
Esaote Europe BV
UK Branch Office, 400 Thames Valley Park Drive,
Reading, Berkshire. RG6 1PT
Tel. +44 118 965 3500, Fax +44 709 288 0231
ukinquiries@esaote.nl

USA
Biosound Esaote Inc.
8000 Castleway Drive,
P.O. Box 50858, Indianapolis, IN 46250
Tel. +1 317 813 6000, Fax +1 317 813 6600
info@biosound.com

BRASIL
Brazilian Direct Office
Rua Tomas Carvalhal, 711, 04006-001 São Paulo SP
Tel. +55 11 2589 0533 Fax +55 11 2589 0527
edson.lopes@esaote.com

ARGENTINA
Esaote Latinoamérica S.A.
San Martin 551, Cuerpo 'C', Piso 8, (C1004AAK) Buenos Aires
Tel. +54 11 4326 1832, Fax: +54 11 4328 1245
info@esaote.com.ar

INDIA
Esaote Asia Pacific Diagnostic Private Limited
F-1, Level 1, Global Arcade, Near Global Business Park
M.G. Road, Gurgaon (Haryana)-122002
Tel. +91 124 4775600, Fax +91 124 4775699
info@esaote.in

CHINA
Esaote China Ltd
18/F, 135 Bonham Strand Trade Centre,
135 Bonham Strand, Sheung Wan, Hong Kong
Tel. +852 2545 8386, Fax +852 2543 3068
esaote@esaotechna.com

RUSSIAN FEDERATION AND CIS
Esaote S.p.A.
18 Leningradsky prospekt, off. 5 and 6, Moscow 125040
Tel. +7 495 232 0205, Fax +7 495 232 1833
esaotemoscov@yandex.ru